

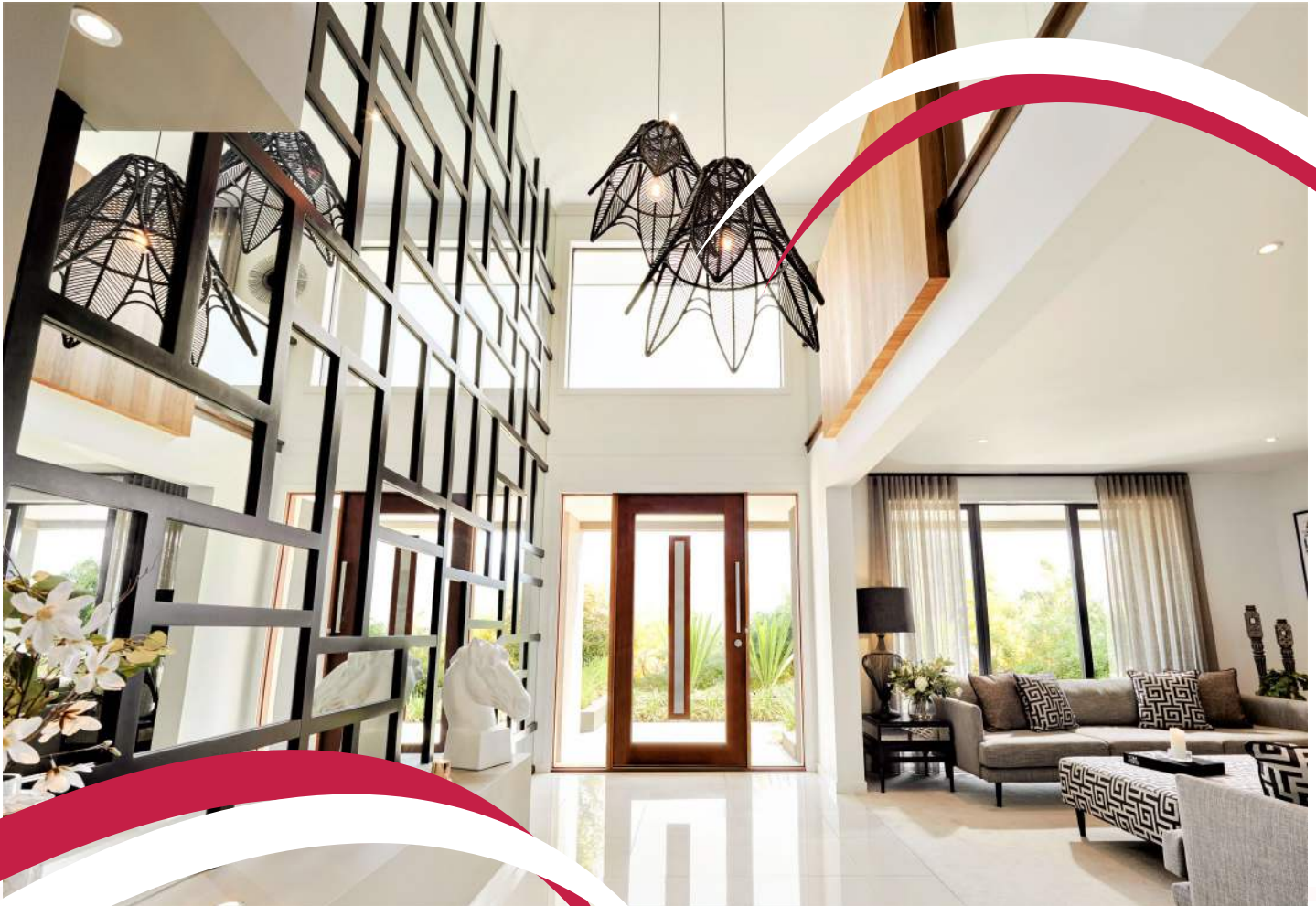
OMNI Living Plus



QBCC | 15041774

Standard Inclusions

May 2025



www.omnibuilthomes.com.au

Ready-to-go Plans
Customised Plans
Knockdown / Rebuilds
House and Land



Collaborate



Create



Construct

SITE & COMPLIANCE

- Council approved plans, soil, survey and engineer slab design
- Fees for HIA contract, Brisbane City Council, QLEAVE, QBCC Insurance
- 500mm total fall allowed over house pad made up of 250mm equal cut and fill
- "S" Class concrete slab on level ground
- Alfresco included where shown on plan
- ★★★★★★ Energy Rating assessment
- R3.5 batts to roof space (includes garage & alfresco)
- Single storey - sisalation to external walls and internal walls of garage with R2.0 batts
- Double storey - sisalation to ground & upper floor external walls and internal walls of garage with R2.0 batts
- Anticon blanket to roof
- Up to eight (8) Ceiling fans throughout, including alfresco



SERVICES & UTILITIES

- Plumbing - sewer, storm water & water connection to house (to 500m2 lot with 6.0m set back from front boundary)
- Telephone from street to first point in house (to 500m2 lot with 6.0m set back from front boundary)
- Electricity - single phase power to house with meter box (to 500m2 lot with 6.0m set back from front boundary)
- Safety switch to meter box
- Smoke detectors as per council requirements
- LED light globes in batten fixtures and GPO fittings as per plans
- Double power points throughout as per plans
- NBN connection provisions
- 2 x TV point
- 1 x external power point



CONSULTATIONS

- In house design meeting to determine client specific requirements for house plan and internal fitout
- Tile Selection with design consultant at Beaumont Tiles
- Colour Selection with design consultant at OMNI Colour Room
- Electrical Selection with design consultant at Definitive Electrical
- Handovers.com



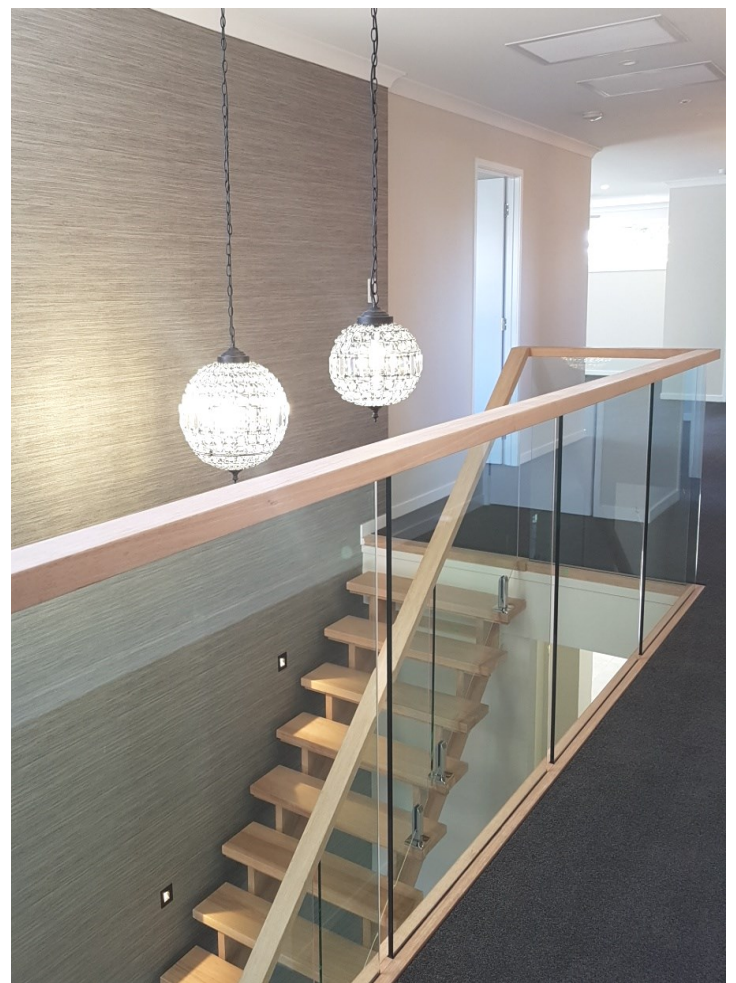
CONSTRUCTION

- Termite treatment - stainless steel mesh flanges to concrete slab penetrations. Full stainless steel mesh to perimeter of brickwork including garage
- Ceiling height single storey - 2590mm
- Ceiling height double storey - 2590mm ground floor
- 2440mm upper floor (plan specific)
- N2 Wind Rating
- Frames and trusses to engineer's design
- Twelve (12) months maintenance inspection



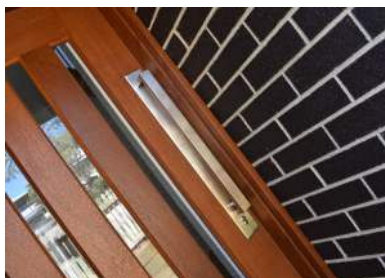
STAIRCASE (DOUBLE STOREY)

- Stain grade treads and risers
- Stain grade stringers and handrail
- Stain grade square newel posts if applicable
- Glass balustrade
- Includes two coats of clear only and one coat of stain colour



EXTERNALS

- Builder's standard range face brick veneer with cladding features (as per plans)
- Brickwork over garage door and brick piers to front (plan specific)
- 280 litre electric heat pump hot water system
- External garden taps (x2)
- Colorbond fascia and gutters
- Choice of Colorbond metal roof
- Colorbond sectional panel lift overhead garage door with remote control - three transmitters (standard range)
- Tiled upper balcony floor (double storey - subject to facade)



Colorbond®

 **CORINTHIAN
DOORS**
A JELD-WEN Company

 **bristile**
roofing®

 **PGH** **BRICKS &
PAVERS**™

KITCHEN



- 900mm free standing cooker with electric oven / grill and gas cooktop
- Stainless steel canopy rangehood - 900mm
- **Stainless steel dishwasher**
- **Stainless steel microwave and trim kit**
- **Double bowl stainless steel sink (undermount)**
- **Chrome café style pull out sink mixer**
- **40mm Mineral Surface island bench & 20mm Mineral Surface rear benchtop**
- Handles with soft close drawers from builder's standard range
- **Fully laminated kitchen and drawers with white melamine shelving to all cupboards (plan specific)**
- Finger pull to overhead doors (plan specific)
- Large pantry with 4 white melamine shelves and flush panel hinged door (plan specific)
- **All overhead cupboards 2100mm high**
- Ceramic tiles to kitchen splashback and return
- **Cold water point to fridge space**



BATHROOM ENSUITE AND LAUNDRY



- Bathroom, ensuite, laundry – 20mm Mineral Surface benchtop
- Bathroom and ensuite laminated base cupboards with portrait doors – no drawers
- **White vitreous china square drop in basins**
- Wall hung basin to powder room (plan specific)
- Semi frameless pivot action clear glass shower screens
- Arrised edge frameless mirrors above vanities
- Designer Island bath to bathroom & **ensuite** (plan specific)
- Chrome flick mixer tapware to bathroom & ensuite
- Chrome hand held shower rail to bathroom
- **Twin shower (head and rail) to ensuite**
- **Chrome towel ladder to master ensuite**
- Chrome single towel rail to bathroom and additional ensuite (plan specific)
- Chrome guest towel ring to powder (plan specific)
- Chrome toilet roll holders to WC
- Soft close white vitreous china toilet
- **Laundry – laminated base cupboard with 3 portrait doors, 3 laminated overhead cupboards with portrait doors**
- **45L stainless steel drop in tub**





WINDOWS AND DOORS

- Powder coated aluminum windows and sliding doors with keyed locks (plans specific)
- Restricted opening to all openable windows - double storey
- Front entry - paint grade PMAD104 clear glazed door, large single, double entry or pivot design (facade & house specific) **2400mm high**
- **Internal - Corinthian flush panel doors Includes pantry 2340mm high to lower floor only (double storey only – plan specific)**
- 2040mm high flush panel doors (applicable where 2440mm ceiling height to upper floor of double storey is included as standard – includes pantry, sliding doors to robes as shown on master plans (plan specific))
- Laundry - 2040mm painted half glazed door or aluminum sliding door (plan specific)

ROBES, SHELVING, STORAGE

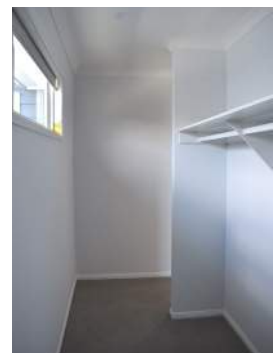
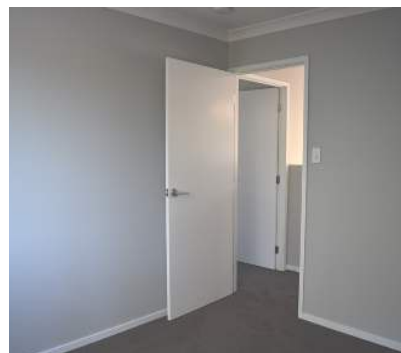
- Robes - single white melamine shelf with hanging rail
- Linen - four white melamine shelves
- Broom cupboard 1 shelf (plan specific)

PAINTING AND LININGS

- 10mm plaster ceilings and walls
- 10mm plaster to alfresco & balcony ceilings
- **Square set cornice to main entry and living spaces - lower floor only (double storey only – plan specific)**
- 75mm cove cornice to remainder of house
- 42 x 12mm architraves with 68 x 12mm skirtings (double pencil round)
- Dulux Wash & Wear paint - 3 coat system throughout
- Gloss paint to interior timber and doors

FLOOR COVERINGS

- Be inspired by tiles selected from the Beaumont Tiles silver range to bathroom, ensuite, laundry and WC areas (standard lay pattern - refer plans)
- Fully tiled shower recess and base (refer plans)



HANDOVER



Watching your new home come together is such an exciting time. The OMNI Team is committed to ensuring your building experience is an enjoyable one.

Throughout the build process we will arrange for all required compliance inspections at Slab, Frame and Final Stages. Our own internal quality inspections are conducted at Slab, Frame, Fix, and Practical Completion, as well as regular onsite inspections to ensure work is being completed to the OMNI high quality trade standard. We also engage an independent inspection at your final handover to ensure you are happy with your new home.

OMNI Built homes are built to impress from top to bottom.

Proudly
supported by





OMNI Living Plus

Standard Inclusions



QBCC | 15041774

OMNI Built Homes reserves the right to alter designs and specifications and/or substitute the make, model or type of any standard inclusion, to a product of equivalent standard without notice. Brochure images are indicative. Refer to signed contract documents and master plans for accurate representation of inclusions.

Kitchen





Collaborate

OMNI

Built Homes

Create

Construct



1.



2.



3.

-
1. **MIZU** DRIFT GOOSENECK SINK MIXER CURVE CHROME 2265797
 2. **MIZU** SOOTHE MK2 GOOSENECK SINK MIXER CHROME 2265235
 3. **MEMO** HUGO DOUBLE BOWL SINK S/S 2402706



OMNI
Built Homes

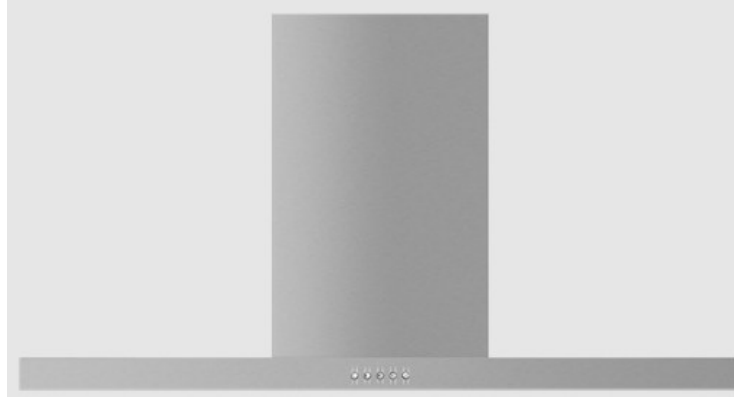
Collaborate

Create

Construct



1.



2.



3.



4.

-
1. FISHER AND PAYKEL FREESTANDING COOKER 90CM OR90SCG1LX1
 2. FISHER AND PAYKEL WALL RANGEHOOD BOX CHIMNEY 90cm HC90BLX1
 3. FISHER AND PAYKEL MICROWAVE OVEN 60CM OM25BLSX1
 4. FISHER AND PAYKEL FREESTANDING DISHWASHER 60CM DW60FC1X1

Bathroom & Ensuite





OMNI
Built Homes

Collaborate

Create

Construct



1.



2.



3.



4.



5.

-
1. **POSH DOMAIN SEMI INSET BASIN WHITE** 9508855
 2. **MIZU DRIFT UNI POP UP P&W PLUG CP** 2263197
 3. **MIZU DRIFT BASIN MIXER** 2267195
 4. **MIZU SOOTHE MK2 BASIN MIXER** 2265203
 5. **POSH DOMAINE RIMLESS CLOSE COUPLED BACK TO WALL TOILET SUITE** 9509218



OMNI
Built Homes

Collaborate

Create

Construct



1.



2.



3.

4.

1. **MIZU DRIFT MK2 TOWEL LADDER** 9511171

2. **MIZU DRIFT ACCESSORIES CHROME:** SINGLE TOWEL RAIL 700MM 2202017, DOUBLE TOWEL RAIL 700MM 2202019, TOILET ROLL HOLDER 9504247

3. **POSH DOMAINE RAIL SHOWER** 2213359

4. **POSH DOMAINE TWIN RAIL SHOWER** 2213365 **MASTER ENSUITE ONLY



OMNI
Built Homes

Collaborate

Create

Construct

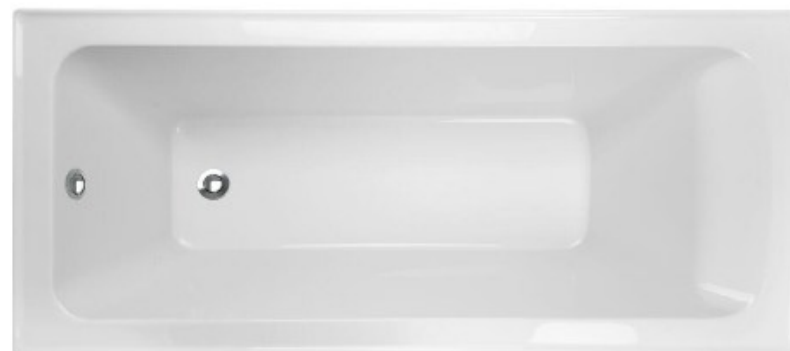
1.



2.



3.



4.



5.



6.



-
1. **MIZU DRIFT SHOWER MIXER 2267361**
 2. **MIZU SOOTHE SHOWER MIXER 9512380**
 3. **ACRYLIC INSET BATH 1650 1704235**
 4. **MIZU DRIFT WALL BASIN/BATH MIXER SET WITH STRAIGHT SPOUT 2267364**
 5. **MIZU SOOTHE MK2 WALL BASIN/BATH MIXER 9512390**
 6. **MIZU DRIFT UNIVERSAL 40MM POP UP P&W 2263197**

Powder Room

(Design Specific)





OMNI
Built Homes

Collaborate

Create

Construct

1.



2.



3.



4.



5.



6.



7.



8.



-
1. **POSH SOLUS MINI WALL BASIN 1TH 9507176**
 2. **POSH SOLUS SEMI RECESS BASIN 1TH 9508223**
 3. **MIZU DRIFT UNIVERSAL WASTE CP 2263197**
 4. **MIZU DRIFT BOTTLE TRAP CHROME 2262546**
 5. **MIZU DRIFT BASIN MIXER CP 2267195**
 6. **MIZU SOOTHE BASIN MIXER 2265203**
 7. **POSH SOLUS ROUND TOILET SUITE 9502264**
 8. **MIZU ACCESSORIES CHROME - GUEST TOWEL HOLDER 2202095 , TOILET ROLL HOLDER 9504247**

Laundry





Collaborate

OMNI

Built Homes

Create

Construct



1.



2.



3.

-
1. **POSH SOLUS MK2 INSERT 45L TROUGH SS 2406943**
 2. **POSH SOLUS MK3 STANDARD SINK MIX 9508811**
 3. **ARCO GIRO WMS CHROME 1120171**

Electrical & Door Furniture





OMNI
Built Homes

Collaborate

Create

Construct

1.



2.



3.



4.



-
1. STANDARD BATTEN LIGHT FIXTURE
 2. CLIPSAL ICONIC FLUSH SWITCH VIVID WHITE
 3. CLIPSAL ICONIC POWER POINT VIVID WHITE
 4. VECTOR II 56" CEILING FAN



Collaborate

OMNI

Built Homes

Create

Construct

1.



2.



3.



-
1. TRILOCK CONTEMPORARY ANGULAR DOUBLE CYLINDER ENTRANCE LEVER SET BRIGHT CHROME
 2. CHOICE TERRACE LEVER COMBINATION SET
 3. TRADEPRO ROUND OR SQUARE ROSE BELA PASSAGE LEVER SET BRIGHT CHROME